

# 30th Anniversary of SMCRA Report

## preliminary plan

### General Considerations

- There will be a paper based report, but we will also include a variety of multimedia components and web-based interactive media.
- Focus not just on the problem, but also on alternatives and solutions.
- Release with some sort of physical press conference and/or telephone and internet-based press conference

### Components of the report

1. Comprehensive map of surface mines in the Central Appalachian Basin.
2. Changes in Central Appalachian employment numbers, poverty rates and other socioeconomic indicators since 1977.
3. Maps and numbers of floods, deaths from mining accidents and other human tragedies resulting from the proliferation of surface mining.
4. Maps and examples of drinking water pollution resulting from impoundment leakage, slurry injections, etc... (including comprehensive map of sludge dams that incorporates size and safety ratings, etc...)
5. Human stories and real-world examples of #2, 3 and 4
6. An accounting of the increasing costs and reliance on subsidies of modern Appalachian surface mining as well as future projections of Central Appalachian coal production and economically recoverable coal reserves (already on the decline).
7. Alternatives to Appalachian surface mining and offsets should it be banned (e.g., underground mining, high sulfur coals, alternative energies, etc...).
8. Key recommendations for policy makers

### Timeline (suggested)

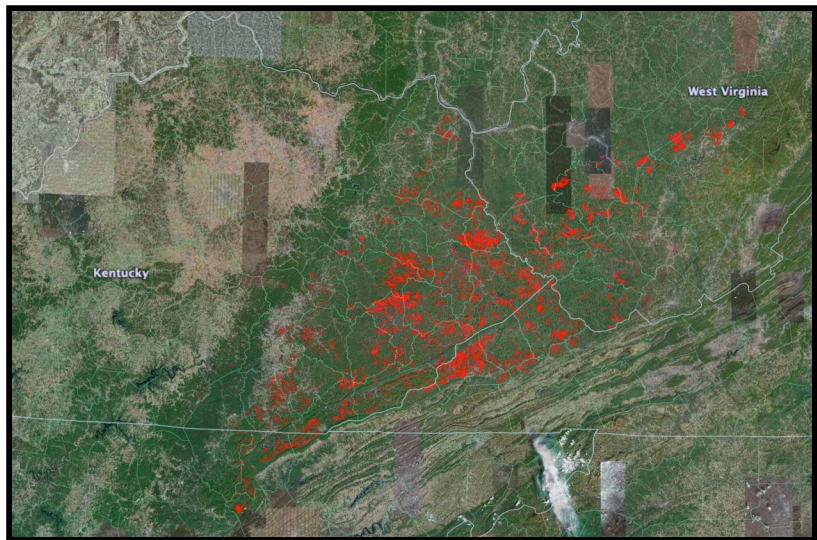
- Media release: August 2nd, 2007
- Final version sent to printer: July 20th, 2007
- Final draft available to partner groups for review: July 10th

(Over)

# Progress to Date:

**Comprehensive mine map:** Almost finished mapping, but there are more surface mines in NE Kentucky, SE West Virginia, and Tennessee's Cumberland Plateau to add. There has been no quantitative analysis of extent as of yet. Still need to add currently permitted areas.

*Note: Only includes Central Appalachian Basin, not NW West Virginia or western Kentucky (in the Northern Appalachian and Illinois Basins respectively)*



**Impoundments:** We have all impoundments mapped, complete with information on height, volume and safety ratings. Need information on leakages, etc...



**Socioeconomics:** We have recent correlations with surface mining of poverty rates, employment stats, income, demographics and more. Need a full retrospective analysis of changes over the past 30 years.

