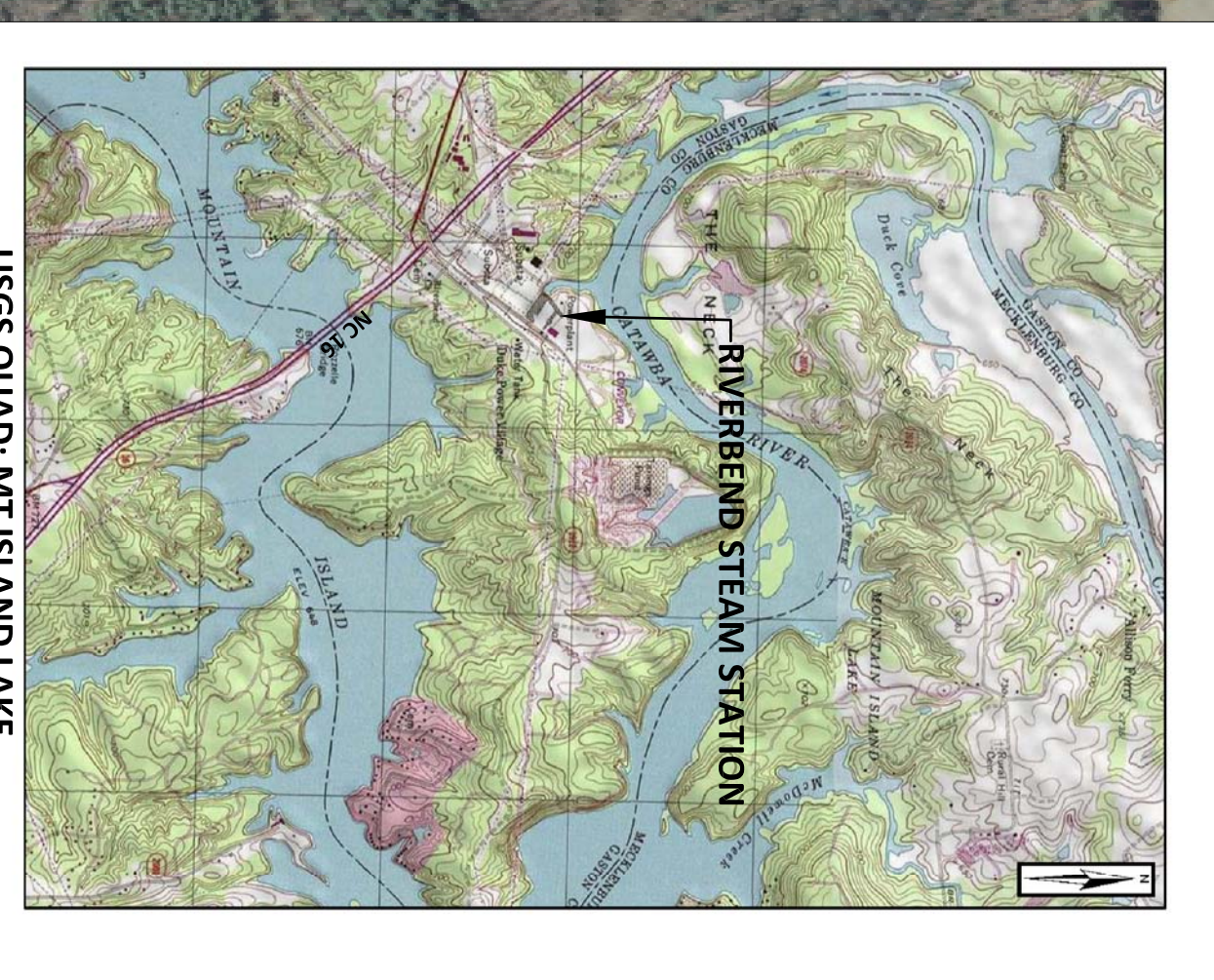
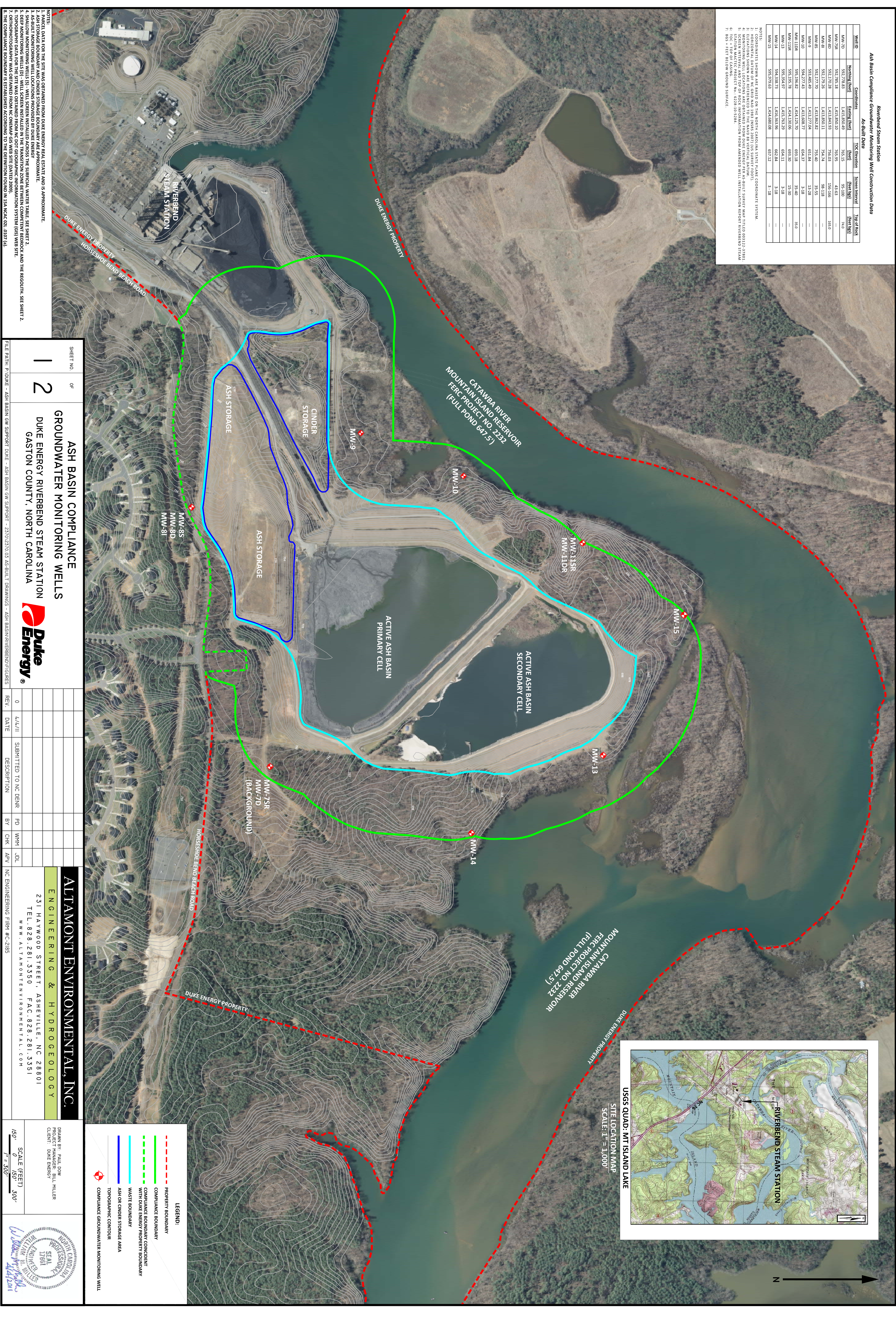


Well ID	Coordinates	DOC Elevation	Screen Interval	Top of Rock
	(Northing (feet))	(feet)	(feet bgl)	(feet bgl)
MW-7D	920,778.83	1,415,850.69	765.15	95.100
MW-7SR	920,785.18	1,415,850.10	765.95	48.60
MW-8D	920,170.26	1,413,843.93	756.03	156.156
MW-8I	920,179.26	1,413,850.11	754.74	98.118
MW-8S	920,177.70	1,413,862.82	755.40	35.55
MW-9	920,485.49	1,412,772.84	651.84	13.28
MW-10	920,477.70	1,412,772.84	651.84	13.28
MW-10R	920,485.49	1,412,772.84	651.84	13.28
MW-10S	920,477.70	1,412,772.84	651.84	13.28
MW-11SR	920,177.70	1,413,862.82	755.40	35.55
MW-11DR	920,179.26	1,413,843.93	756.03	156.156
MW-13	925,354.97	1,414,100.6	654.11	3.18
MW-14	924,338.73	1,416,363.96	662.84	3.18
MW-15	920,979.63	1,414,600.08	657.12	3.18

- NOTES:
1. COORDINATES SHOWN ARE BASED ON THE NORTH CAROLINA STATE PLATE COORDINATE SYSTEM.
 2. ELEVATIONS SHOWN ARE REFERENCED TO THE MGS 88 VERTICAL DATUM.
 3. ELEVATIONS SHOWN ARE REFERENCED TO THE MGS 88 VERTICAL DATUM.
 4. SCREEN INTERVAL AND TOP OF ROCK INFORMATION FROM AERBOND WELL INSTALLATION REPORT RIVERBEND STEAM STATION PRACTICE PROJECT NO. 8228105284.
 5. SCREEN INTERVAL AND TOP OF ROCK INFORMATION FROM AERBOND WELL INSTALLATION REPORT RIVERBEND STEAM STATION PRACTICE PROJECT NO. 8228105284.
 6. 5 FEET BELOW GROUND SURFACE.
 7. 865 FEET BELOW GROUND SURFACE.



SHEET NO. **1** OF **2**

**ASH BASIN COMPLIANCE
GROUNDWATER MONITORING WELLS**

DUKE ENERGY RIVERBEND STEAM STATION
GASTON COUNTY, NORTH CAROLINA

REV.	DATE	DESCRIPTION	BY	CHK	APP
0	4/27/11	SUBMITTED TO NC DENR	WMM	JDL	

ALTAMONT ENVIRONMENTAL, INC.

ENGINEERING & HYDROGEOLOGY

231 HAYWOOD STREET, ASHEVILLE, NC 28801
TEL. 828.281.3350 FAX. 828.281.3351
WWW.ALTAMONTENVIRONMENTAL.COM

DESIGNED BY: PAUL LOWE
PROJECT MANAGER: BILL MILLER
CLIENT: DUKE ENERGY

SCALE (FEET)
1" = 150'
1" = 300'

LEGEND:

- PROPERTY BOUNDARY
- COMPLIANCE BOUNDARY
- COMPLIANCE BOUNDARY CONCEPT WITH SHOWN PROPERTY BOUNDARY
- WASTE BOUNDARY
- ASH OR CINDER STORAGE AREA
- TOPOGRAPHIC CONTOUR
- COMPLIANCE GROUNDWATER MONITORING WELL

- NOTES:
1. MARKET DATA FOR THE SITE WAS OBTAINED FROM DUKE ENERGY REAL ESTATE AND IS APPROXIMATE.
 2. MARKET DATA FOR THE SITE WAS OBTAINED FROM DUKE ENERGY REAL ESTATE AND IS APPROXIMATE.
 3. AS-BUILT MONITORING WELL LOCATIONS PROVIDED BY DUKE ENERGY.
 4. SHALLOW MONITORING WELLS (9') WELL SCREEN INSTALLED ACROSS THE SURFACE WATER TABLE. SEE SHEET 2.
 5. DEEP MONITORING WELLS (60') WELL SCREEN INSTALLED IN THE TRANSITION ZONE BETWEEN COMPLETED BACKFILL AND THE RESOINUM. SEE SHEET 2.
 6. MARKET DATA FOR THE SITE WAS OBTAINED FROM DUKE ENERGY REAL ESTATE AND IS APPROXIMATE.
 7. ORTHOPHOTOGRAPHY WAS OBTAINED FROM MCGRAW HILL GCS WEBSITE (DATED 2009).
 8. THE COMPLIANCE BOUNDARY IS ESTABLISHED ACCORDING TO THE DEFINITION FOUND IN 15A NCGS CODE 1507 (a).