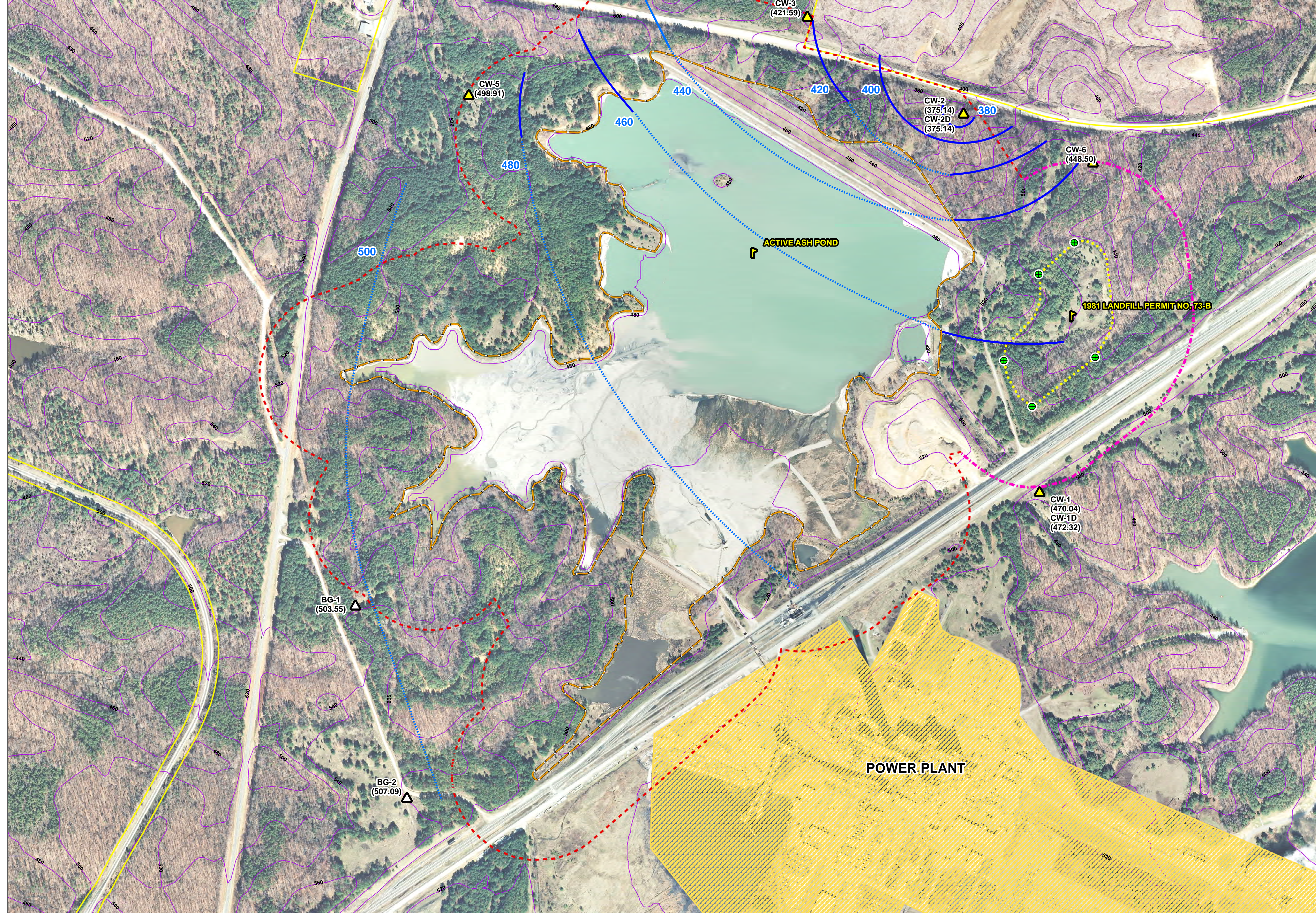


Well ID	Position	Use	Total Depth (feet)	Well Screen Interval (feet)	Date Well Installed	Northing	Easting	Ground Elevation (NAVD 88)	Top of Casing Elevation (NAVD 88)	Depth to Groundwater 12/2010 (feet)	Groundwater Elevation 12/2010 (feet)	Driller
CW-1	Down-gradient	Compliance	25.5	15.5 - 25.0	11/9/2010	1012696.5440	2032714.4560	486.98	489.88	19.84	471.04	SAVE inc.
CW-1D	Down-gradient	Compliance	40.4	30.1 - 39.9	11/9/2010	1012703.5510	2032715.8530	488.31	490.96	18.64	472.32	SAVE inc.
CW-2	Down-gradient	Compliance	18.0	7.7 - 17.6	11/11/2010	1015043.8760	2032238.7050	386.66	389.00	13.86	375.14	SAVE inc.
CW-2D	Down-gradient	Compliance	55.9	45.6 - 55.4	11/11/2010	1015046.8760	2032245.0242	386.63	389.53	14.39	375.14	SAVE inc.
CW-3	Down-gradient	Compliance	32.3	17.0 - 31.6	11/16/2010	1015647.5860	2031278.0254	435.27	437.68	16.09	421.59	SAVE inc.
CW-4	Down-gradient	Compliance	45.3	35.0 - 39.8	11/12/2010	1015911.4360	2030436.2720	448.76	451.31	22.53	428.78	SAVE inc.
CW-5	Down-gradient	Compliance	41.6	31.3 - 41.1	11/19/2010	1016162.2730	2029182.7290	507.21	509.90	10.09	498.91	SAVE inc.
CW-6	Down-gradient	Compliance	22.4	7.1 - 16.0	11/10/2010	1016143.8110	2030346.0760	458.97	462.83	14.33	448.50	SAVE inc.
BG-1*	Up-gradient	Background	52	42 - 42	10/15/2008	1013000.5230	2028480.3790	537.50	540.19	36.64	503.95	Quince Inc.
BG-2	Up-gradient	Background	45.3	29.4 - 44.9	9/28/2010	1010810.0210	2028799.4340	539.84	542.66	35.57	507.09	Quince Inc.

*Moffitt & Creek provided the well coordinates and top of casing elevations based on measurements obtained on December 10, 2010
 Well ID - feet below grade
 BG-1* - Former well ID installed by Quince, Inc. on October 15, 2008



Legend

- BACKGROUND WELL
- COMPLIANCE WELL LOCATION
- 1981 LANDFILL BOUNDARY COORDINATES
- COMPLIANCE BOUNDARY
- POWER PLANT
- APPROXIMATE 1981 LANDFILL BOUNDARY
- WASTE BOUNDARY
- PARCEL BOUNDARY
- CONTOUR INTERVAL 20 FT
- GROUNDWATER ELEVATION CONTOUR
- (831.20) GROUNDWATER ELEVATION (12-2-2010)

TOPO SOURCE:
NCDOT LIDAR, DATED 2007

IMAGE SOURCE:
NC ONEMAP, PERSON CO., DATED 2008

PARCEL SOURCE:
PERSON COUNTY GIS, RECEIVED JAN . 2010

LANDFILL BOUNDARY COORDINATES SOURCE:
NCDHR DIVISION OF HEALTH SERVICES
SOLID WASTE MANAGEMENT 1981 PERMIT NO. 73-B

OBJECTS ARE SHOWN IN GENERAL ARRANGEMENT FOR ILLUSTRATION PURPOSES. THE LOCATIONS OF OBJECTS SHOWN ARE NOT NECESSARILY ACCURATE AND HAVE NOT BEEN SURVEYED.

COMPLIANCE WELLS CW-1D AND CW-2D WERE NOT USED TO ESTIMATE GROUNDWATER FLOW



NO.	DATE	DESCRIPTION	BY

COMPLIANCE WELL NETWORK MAP

MAYO ELECTRIC PLANT
PROGRESS ENERGY
ROXBORO, NORTH CAROLINA

DRAWN BY: JBP CHECKED BY: EQH

DESIGNED BY: APPROVED BY:

PROJECT NO: 1584-10-027

SCALE: 1" = 300' DATE: December, 2010

DRAWING NUMBER: OF: 7

DRAWING PATH: