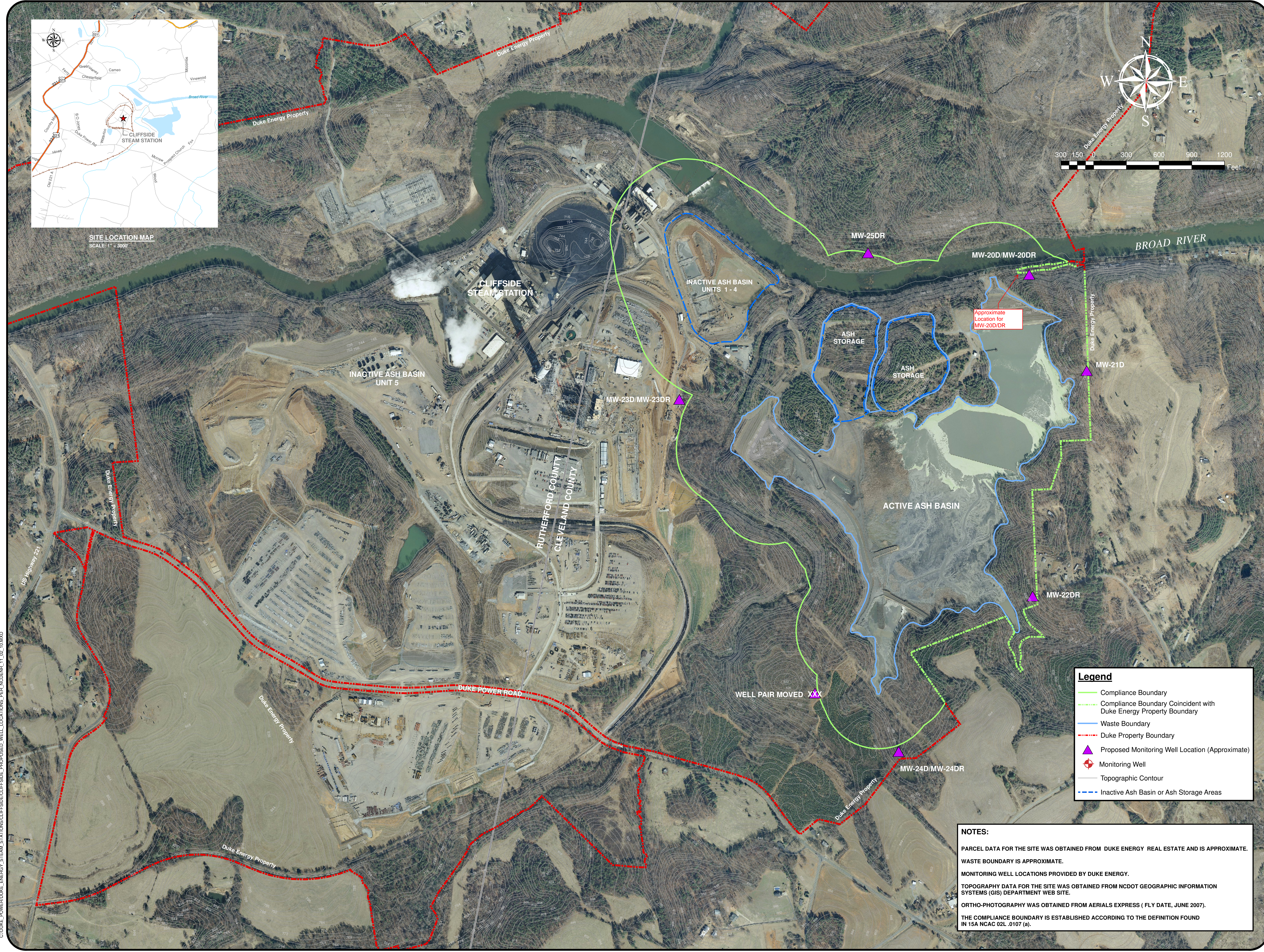


SITE LOCATION MAP
SCALE: 1" = 3000'



Legend

- Compliance Boundary
- - - Compliance Boundary Coincident with Duke Energy Property Boundary
- Waste Boundary
- - - Duke Property Boundary
- ▲ Proposed Monitoring Well Location (Approximate)
- ⊕ Monitoring Well
- Topographic Contour
- - - Inactive Ash Basin or Ash Storage Areas

NOTES:

PARCEL DATA FOR THE SITE WAS OBTAINED FROM DUKE ENERGY REAL ESTATE AND IS APPROXIMATE.

WASTE BOUNDARY IS APPROXIMATE.

MONITORING WELL LOCATIONS PROVIDED BY DUKE ENERGY.

TOPOGRAPHY DATA FOR THE SITE WAS OBTAINED FROM NCDOT GEOGRAPHIC INFORMATION SYSTEMS (GIS) DEPARTMENT WEB SITE.

ORTHO-PHOTOGRAPHY WAS OBTAINED FROM AERIALS EXPRESS (FLY DATE, JUNE 2007).

THE COMPLIANCE BOUNDARY IS ESTABLISHED ACCORDING TO THE DEFINITION FOUND IN 15A NCAC 02L .0107 (a).



S&ME
WWW.SMEINC.COM
44 Buck Shoals Road, Suite C-3
Arden, North Carolina 28704
P: 828.681.3800

NO.	DATE	DESCRIPTION	BY
1	07/08/2010	Revised Program Well Locations, Revised Property Line Per Duke Energy GIS Data	WMM
2	07/08/2010	Revised Program Well Locations, Revised Property Line Per Duke Energy GIS Data	WMM
3	07/08/2010	Revised Program Well Locations, Revised Property Line Per Duke Energy GIS Data	WMM
4	07/08/2010	Revised Program Well Locations, Revised Property Line Per Duke Energy GIS Data	WMM
5	07/08/2010	Revised Program Well Locations, Revised Property Line Per Duke Energy GIS Data	WMM
6	07/08/2010	Revised Program Well Locations, Revised Property Line Per Duke Energy GIS Data	WMM
7	07/08/2010	Revised Program Well Locations, Revised Property Line Per Duke Energy GIS Data	WMM

**PROPOSED MONITORING LOCATIONS
CLIFFSIDE ASH BASIN**

**DUKE ENERGY - CLIFFSIDE STEAM STATION
CLEVELAND COUNTY, NORTH CAROLINA**

DRAWN BY: R. POWERS	CHECKED BY: WMM
DESIGNED BY:	APPROVED BY: LTA
PROJECT NO: 1411-09-096	DATE: 07/08/2010
SCALE: 1"=300'	DATE: 07/08/2010
DRAWING: 1	OF: 1

C:\DUKE_POWER\DUKE_ENERGY_STATION\CLIFFSIDE\CLIFFSIDE_PROPOSED_WELL_LOCATIONS_PER_NCDENR_11_02_10.MXD