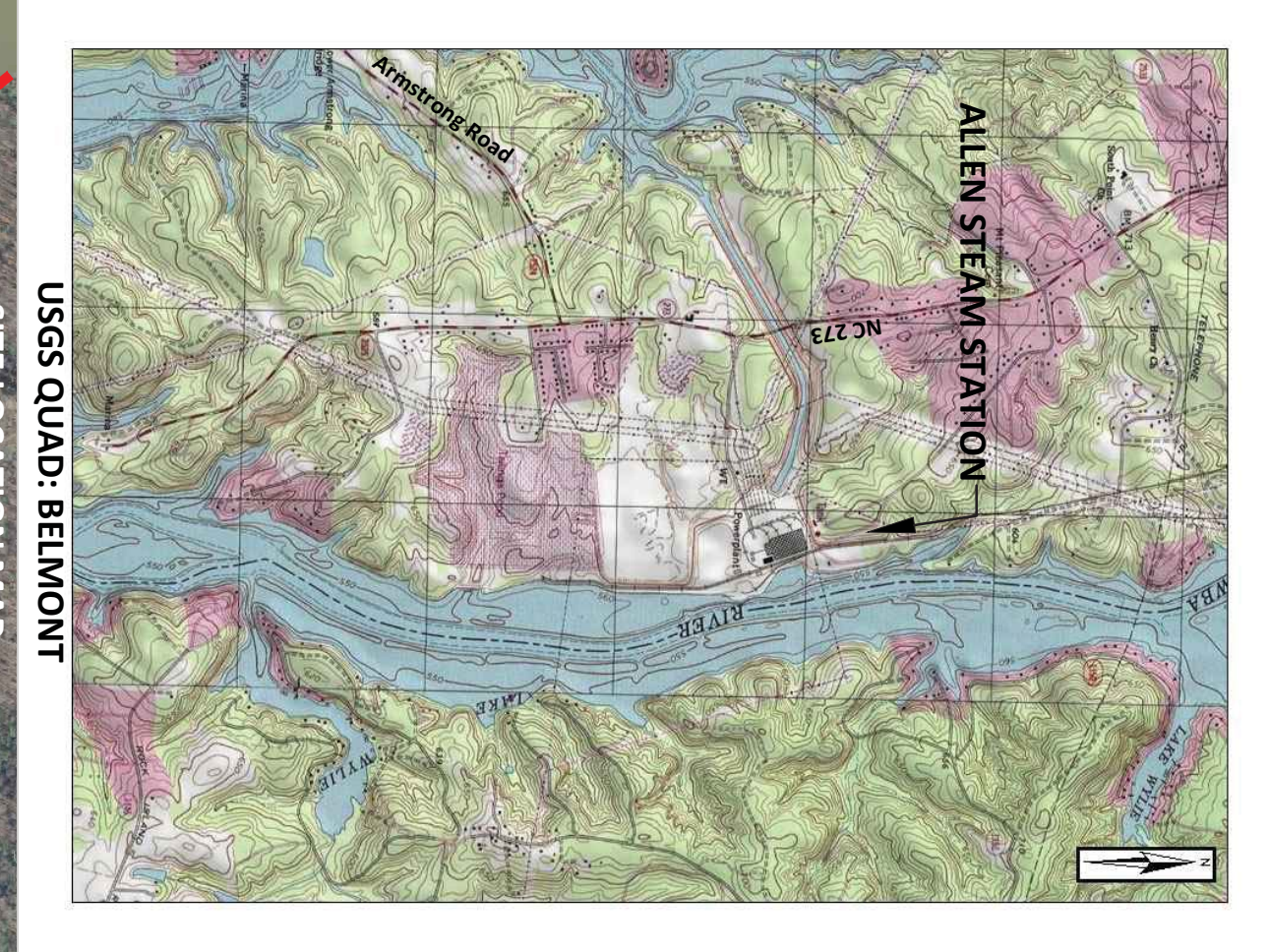




LEGEND:

- - - PROPERTY BOUNDARY
- - - COMPLIANCE BOUNDARY
- - - COMPLIANCE BOUNDARY CONCEPT WITH DUKE ENERGY PROPERTY BOUNDARY
- - - WASTE BOUNDARY
- - - ASH STORAGE BOUNDARY
- - - TOPOGRAPHIC CONTOUR (5')
- - - LANDFILL FACILITY BOUNDARY
- + COMPLIANCE GROUNDWATER MONITORING WELL

- NOTES:**
1. PACED DATA FOR THE SITE WAS OBTAINED FROM DUKE ENERGY AND GASTON COUNTY AND IS APPROXIMATE.
 2. HORIZONTAL DATUM OF NC GRID (NAD 1983) (NSRS 2007).
 3. ELEVATIONS SHOWN ARE REFERENCED TO THE NAD 88 VERTICAL DATUM.
 4. COORDINATES AND ELEVATIONS SHOWN ARE IN U.S. SURVEY FOOT.
 5. MONITORING WELL LOCATIONS ARE OBTAINED FROM DUKE ENERGY PER AS-BUILT SURVEY MAP TITLED 002096-378017 MONITORING WELLS.
 6. SCREEN INTERVAL AND TOP OF ROCK INFORMATION FOR AB-4, AB-4D FROM S&ME PROJECT 1356-06-481.
 7. ALL OTHER SCREEN INTERVAL AND TOP OF ROCK INFORMATION FROM WACCTE PROJECT NO. 6228-10-5284 TITLED ASH BASIN MONITORING WELL INSTALLATION REPORT, ALLEN STEAM STATION, DATED JANUARY 7, 2011.
 8. TOE = BELOW GROUND SURFACE.
 9. BGS = BELOW GROUND SURFACE.



LAKE WYLIE DUKE ENERGY
CATAWBA-WATEREE PROJECT
FERC PROJECT #2232
(Full Pond 569.4')

LAKE WYLIE DUKE ENERGY
CATAWBA-WATEREE PROJECT
FERC PROJECT #2232
(Full Pond 569.4')

**Allen Steam Station
Ash Basin Compliance Groundwater Monitoring Well Construction Data**

Well ID	Northing (feet)	Eastings (feet)	TOC Elevation (feet)	Screen Interval (feet bgs)	Top of Rock (feet bgs)
AB-1R	529,135.87	1,396,853.87	673.86	51'-7.1	---
AB-4	525,731.58	1,396,723.77	650.46	7'-2.2	---
AB-4D	525,728.26	1,396,717.97	649.17	45'-5.0	40
AB-9S	527,138.02	1,400,630.95	582.73	5.5'-20.5	---
AB-9D	527,134.58	1,400,631.50	582.72	110'-115	109
AB-10S	524,935.45	1,400,656.10	575.05	3'-1.8	---
AB-10D	524,935.07	1,400,659.77	574.97	57.5'-62.5	45
AB-11D	523,285.10	1,399,059.61	618.07	15'-2.0	10
AB-12S	524,228.86	1,396,538.86	651.69	8'-2.3	---
AB-12D	524,231.41	1,396,539.93	651.75	91'-9.6	94
AB-13S	526,178.49	1,397,490.13	648.72	6'-2.1	---
AB-13D	526,169.12	1,397,488.65	648.54	67'-7.2	64
AB-14D	527,206.47	1,396,716.58	641.80	19.3'-29.3	13

- NOTES:**
1. COORDINATES SHOWN ARE BASED ON THE NORTH CAROLINA STATE PLANE COORDINATE SYSTEM.
 2. HORIZONTAL DATUM OF NC GRID (NAD 1983) (NSRS 2007).
 3. ELEVATIONS SHOWN ARE REFERENCED TO THE NAD 88 VERTICAL DATUM.
 4. COORDINATES AND ELEVATIONS SHOWN ARE IN U.S. SURVEY FOOT.
 5. MONITORING WELL LOCATIONS ARE OBTAINED FROM DUKE ENERGY PER AS-BUILT SURVEY MAP TITLED 002096-378017 MONITORING WELLS.
 6. SCREEN INTERVAL AND TOP OF ROCK INFORMATION FOR AB-4, AB-4D FROM S&ME PROJECT 1356-06-481.
 7. ALL OTHER SCREEN INTERVAL AND TOP OF ROCK INFORMATION FROM WACCTE PROJECT NO. 6228-10-5284 TITLED ASH BASIN MONITORING WELL INSTALLATION REPORT, ALLEN STEAM STATION, DATED JANUARY 7, 2011.
 8. TOE = BELOW GROUND SURFACE.
 9. BGS = BELOW GROUND SURFACE.

SHEET NO. **1** OF **2**

**ASH BASIN COMPLIANCE
GROUNDWATER MONITORING WELLS**

**DUKE ENERGY ALLEN STEAM STATION
GASTON COUNTY, NORTH CAROLINA**

REV.	DATE	DESCRIPTION	BY	CHK	APP
0	4-7-2011	SUBMITTED TO USDEAR	PD	WHM	JDL

ALTA MONT ENVIRONMENTAL, INC.
ENGINEERING & HYDROGEOLOGY

231 HAYWOOD STREET, ASHEVILLE, NC 28860
TEL: 828.281.3350 FAX: 828.281.3351
WWW.ALTA-MONT-ENVIRONMENTAL.COM

DRAWN BY: PAUL DOW
PROJECT MANAGER: BILL MILLER
CLIENT: DUKE ENERGY

SCALE (FEET)
200' 0' 200' 400'
1" = 400'