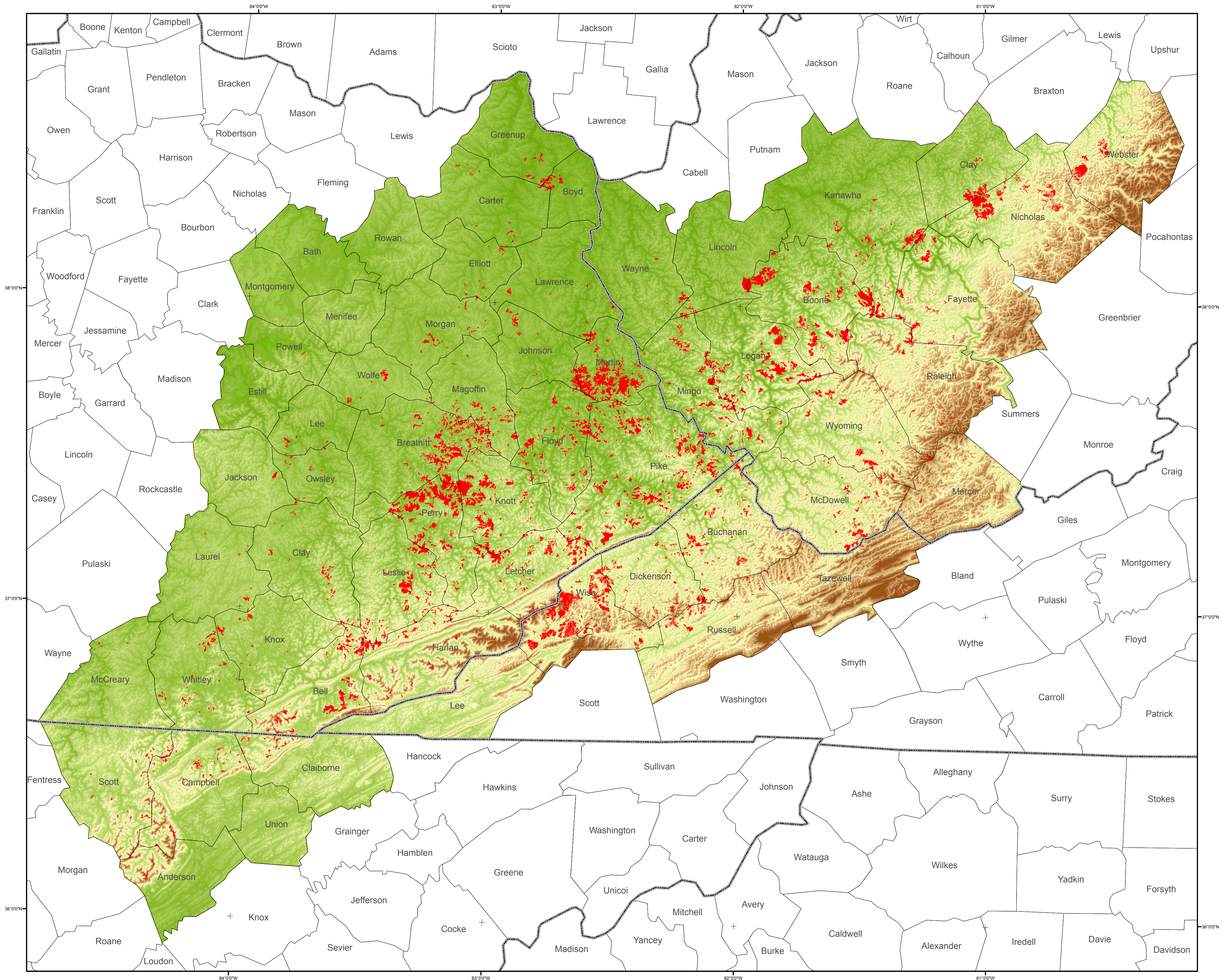
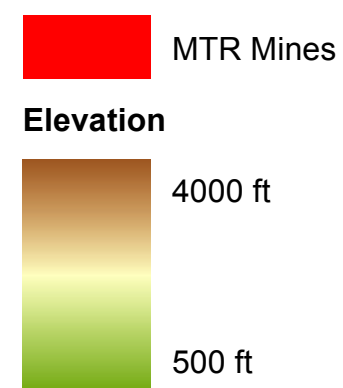


# Central Appalachian Region

# Mountaintop Removal Mines

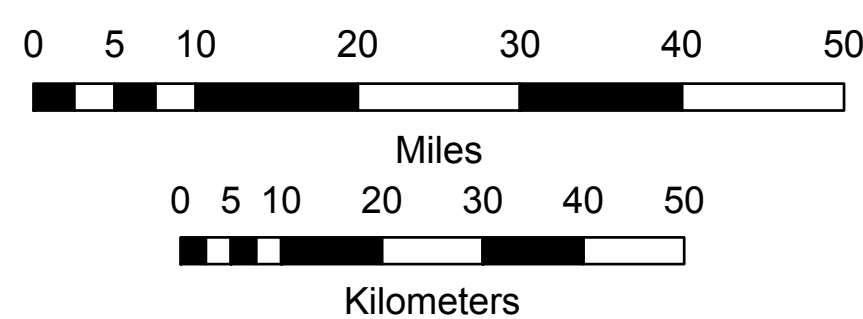


## Legend



Mountaintop Removal (MTR) mining activity was derived from historical satellite imagery over three decades. A two-step Land Cover / Land Use classification of the satellite data was performed to identify mining activity. MTR mining activity was then identified on the basis of spatial relationship and impact with respect to ridgetops mapped from digital elevation data.

Digital analysis of Landsat TM satellite imagery and digital elevation data was performed by SkyTruth for Appalachian Voices.



WGS\_1984\_UTM\_Zone\_17N  
 Projection: Transverse\_Mercator  
 False\_Easting: 500000.000000  
 False\_Northing: 0.000000  
 Central\_Meridian: -81.000000  
 Scale\_Factor: 0.999600  
 Latitude\_Of\_Origin: 0.000000  
 Linear\_Unit: Meter  
 Datum: WGS\_1984



Location Map